



2023 World Day of the Poor



SPONSORED BY:



FORDHAM | IPED

THE GRADUATE PROGRAM IN
INTERNATIONAL POLITICAL ECONOMY AND DEVELOPMENT

FORDHAM UNIVERSITY, NEW YORK CITY



Welcome participants of the 2023 World Day of the Poor United Nations Side Event sponsored by Fordham University's Graduate Program in International Political Economy and Development (Fordham IPED), Catholic Relief Services (CRS) and Caritas Internationalis!

We extend a warm welcome to you all as we gather for the second time in New York City to commemorate the World Day of the Poor. This year's event looks at the ongoing Global Food Crisis. We aim to provide everyone an update on the current state of the global poverty, and hopefully prompt activism and action from our audience.

We look forward to meeting you and discussing ideas on how we can better contribute in eradicating poverty—whether in our local community, or in other parts of the world.

SCHEDULE

Friday, 17 November 2023

Church Center for the United Nations

777 UN Plaza, corner of East 44th St. and First Ave., 2nd Floor, NY, NY 10017

9:30 AM	Registration & Light Breakfast
10:00 AM	Welcome & Moderator Ms. Brianna Fitzpatrick <i>Liaison to the United Nations, Caritas Internationalis</i>
10:05 AM	Greetings Monsignor Robert Murphy <i>Deputy Permanent Observer of the Holy See to the U.N.</i>
10:15 AM	Trends in Global Poverty: Release of the 2023 issue of Fordham University's Pope Francis Global Poverty Index Prof. Henry Schwalbenberg, PhD <i>Director, Graduate Program in International Political Economy and Development, Fordham University</i> Ms. Babalwa Nogwanya and Mr. Harrison Yu-Zepeda <i>Fordham IPED MA Class of 2024</i>
10:45 AM	Break
11:00 AM	Keynote Address: Global Food Crisis Ms. Julie Ideh <i>Global Technical Director of Agriculture and Livelihoods Catholic Relief Services</i>
12:00 PM	Light Lunch
1:00 PM	Career Panel
2:15 PM	Preparation for UN Headquarters Tour



Getting to New York

There are several ways you can travel to New York City. You may travel by plane, train or bus.

TRAVELLING BY PLANE

There are 3 airports that serve the general metropolitan New York City area: John F. Kennedy Airport (JFK), La Guardia Airport (LGA) and Newark Airport (EWR) in New Jersey. The easiest and safest way to go to midtown Manhattan is to fly through La Guardia Airport and take a yellow metered taxi from the airport.

However, if you are flying through other airports, or would like to explore other transportation options, we have outlined below your option.

As a general reminder, do not accept offers or transportation from anyone. These private shuttles or vehicles may end up charging you more than other transportation options that are commonly taken by the public.

LA GUARDIA AIRPORT (LGA)

To travel to midtown from La Guardia, travelers may take the subway, the LIRR train, taxicabs, or rideshare apps .

1) New York Taxicabs

The safest and most convenient way to travel from La Guardia Airport to Manhattan is to take the yellow cabs that are available from the airport. Please make sure you go to the line for the yellow cabs that are located just outside the terminal exit doors. There is an official dispatcher for the official cab lines that can direct you to legal and safe cab services. Yellow cabs from La Guardia are metered.

2) Ride Share Apps

You may travel to midtown from La Guardia using Uber and Lyft. There are designated pick-up points for passengers for Uber and Lyft.

LGA Terminal A

The passenger pick-up area for Car Services and App-based Rides is located directly outside of, and across the street from, Terminal A.

LGA Terminal B

Pick-up area is located on Level 2 of the Terminal B Parking Garage, located directly adjacent to Terminal B. Please follow the “Car Services” signs in Terminal B to the pick-up area and contact your car service/app-based ride provider when you reach the pick-up area.

LGA Terminal C

Terminal C pick-up is at the arrivals inner lane. Please follow the “Car Services” signs in Terminal C to the pick-up area and contact your car service/app-based ride provider when you reach the respective pick-up area.

3) Other public transportation options

Other public transportation options are available from La Guardia Airport.

LGA Terminal B and C

To travel to midtown from Terminal B and Terminal C of La Guardia Airport, travelers may take the MTA busses which connect to the subway

lines or LIRR. To go to midtown Manhattan, the best bus to take is the Q70 La Guardia Link which is free. The Q70 bus passes by the 74th Street/Broadway stop that where you can take the E,F,M,R and 7 subway lines. To take the subway trains from this stop, you may pay via Metrocard, [OMNY card](#), [Apple Pay](#), Debit or Credit Cards. If using OMNY, we suggest you [set-up an OMNY](#) account prior to arriving to New York.

The Q70 bus also passes by the Woodside-61st Street Stop of the 7 train and the LIRR. The fare from the Woodside 61st Street Stop of LIRR to either Grand Central or Penn Station is \$7.00 for (City Ticket Peak Hours), or \$5.00 for (City Ticket OffPeak Hours). Peak fares are charged during rush hours on any weekday train scheduled to arrive in Grand Central or Penn Station between 6AM—10 AM, or scheduled to depart Grand Central or Penn Station between 4pm-8pm. You can buy tickets from machines or the counters located at Woodside-61st Street LIRR Station.

LGA Terminal A

To travel to midtown from Terminal A of La Guardia Airport, travelers may take the Q48 bus. The Q48 bus passes by the 74th Street/Broadway stop that where you can take the E,F,M,R and 7 subway lines. To take the Q48 bus and the subway trains , you may pay via Metrocard, [OMNY card](#), [Apple Pay](#), Debit or Credit Cards. If using OMNY, we suggest you [set-up an OMNY](#) account prior to arriving to New York.

[JOHN F. KENNEDY AIRPORT \(JFK\)](#)

To travel to midtown from JFK, travelers may take the subway, the LIRR train, or taxicabs .

1) New York Taxicabs

The safest and most convenient way to travel from JFK Airport to Manhattan is to take the yellow cabs that are available from the airport.

Please make sure you go to the line for the yellow cabs that are located just outside the terminal exit doors. There is an official dispatcher for the official cab lines that can direct you to legal and safe cab services. Yellow cabs have a fixed fare of \$70 between JFK and Manhattan, plus surcharge rates. Please refer to this [page](#) for information on the charges for yellow cabs. Please note that it is customary in New York to tip for cab rides.

2) Ride Share Apps

You may travel to midtown from JFK using Uber and Lyft. There are designated pick-up points for passengers for Uber and Lyft.

For Terminals 1-4 and 7-8, head outside from arrivals or baggage claim. Look for “Ride App Pick Up” or “Passenger Pick Up” signs

For Terminal 5, proceed to the AirTrain via the Skywalk on Level 4. Take the AirTrain and exit at Terminal 7. Follow signs for Ride App Pick Up to Orange Parking. Request your ride once you have reached the Orange Parking and Ride App Pick Up.

3) Subway

The [JFK Airtrain](#) goes through all the terminals of JFK. The airtrain is free unless you start or end your ride at the Jamaica (connects to the E, J, Z subway lines) or the Howard Beach (connects to the A subway line) stops.



To get to midtown Manhattan, you may get off the Jamaica stop and take the E train. Once you get to the Jamaica stop, you can purchase a Metrocard to pay the airtrain. The fee is 8.25. To take the E subway train, you need to pay 2.90. Subway and bus fares in New York may be paid via Metrocard, [OMNY card](#), [Apple Pay](#), Debit or Credit Cards. If using OMNY, we suggest you [set-up an OMNY](#) account prior to arriving to New York.

4) Long Island Rail Road (LIRR)

An alternative to taking the subway is taking the LIRR. The LIRR goes directly to Grand Central or to Penn Station located at Midtown Manhattan. You can take an LIRR from the Jamaica station stop of the airtrain. The fare from Jamaica to either Grand Central or Penn Station is \$7.00 for (City Ticket Peak Hours), or \$5.00 for (City Ticket OffPeak Hours). Peak fares are charged during rush hours on any weekday train scheduled to arrive in Grand Central or Penn Station between 6AM—10 AM, or scheduled to depart Grand Central or Penn Station between 4pm-8pm. You can buy tickets from machines or the counters located at Jamaica LIRR Station.

NEWARK AIRPORT (EWR)

Newark Airport is located in Newark City, New Jersey. To travel to midtown from Newark, travelers may take the train, express bus, or taxicabs.

1) Ride Share Apps

You may travel to midtown from Newark using Uber and Lyft. There are designated pick-up points for passengers for Uber and Lyft. For pick-up for Uber or Lyft at Newark Airport, exit the terminal on the arrivals level. Head outside and follow signs for Ground Transportation and Passenger Pick-Up. Make sure you also message or call the driver to determine your location.

1) NJ Transit Train

The Airtrain at Newark Airport goes through all the terminals of Newark. The airtrain is free unless you start or end your ride at the Newark Liberty

International Airport Rail Stop which connects to NJ Transit and Amtrak trains. The fee is \$8.

To go to midtown Manhattan, take the NJ Transit Train from Newark Stop to New York Penn Station. The fare is \$15.75. You can buy your ticket for the train at the Newark Stop of NJ Transit.

Make sure you check the schedule of the NJ Transit trains. There are no trains between 12 midnight and 5AM. To check the schedule, visit the [NJ Transit website](#).

2) Express Bus

Another way to go to midtown Manhattan is via an express bus from Newark Airport. The express bus is operated by Coach USA. There is a bus that goes to and from Manhattan every hour. The bus goes by each terminal of Newark Airport. Make sure you go to the designated bus stop for the express bus. From the arrival baggage level, go out the exit and cross towards the outer driveway. Look for the bus stop for “Express Bus to New York”.

The Express bus stops at Port Authority Bus Terminal (corner of 42nd and 8th Avenue), Bryant Park (42nd Street between 5th and 6th Avenues), and Grand Central Terminal (41st Street, between Park and Lexington Avenues).

The cost of the express bus ticket is \$21.20 (with tax). You can either buy the ticket online, or pay on the bus with cash (no cards accepted for onboard payments). To purchase a ticket online, go to the [Coach USA website](#).

Make sure you check the schedule of the Coach USA express buses. There are no buses between 12 midnight to 5:30 AM. To check the schedule, visit the [Coach USA website](#).



TRAVELLING BY TRAIN

There are two main train stations that connect New York City to nearby cities or state: Grand Central Terminal and New York Penn Station.

Grand Central Terminal is located at East 42nd Street, between Vanderbilt and Lexington Avenues. From Grand Central, travelers can take the 4, 5, 6, 7 subway lines as well as the S shuttle line to Port Authority. To take the subway trains from this stop, you may pay via Metrocard, [OMNY card](#), [Apple Pay](#), Debit or Credit Cards. If using OMNY, we suggest you [set-up an OMNY account](#) prior to arriving to New York.

New York Penn Station is located on the west side of midtown Manhattan (between 8th and 7th Avenues, by 34th and 33rd Streets). Travelers taking Amtrak to Penn Station will arrive at the Moynihan Train Hall which is part of Penn Station. From Penn Station, travelers can take the A, C and E subway lines from 8th avenue, and 1,2 3 subway lines from 7th avenue. The B, D, F, M, N, Q, R trains are also available from 6th avenue and 34th Street.

TRAVELLING BY BUS

Port Authority Bus Terminal

The main bus station in New York City is the Port Authority Bus Terminal. The Port Authority is located along 8th Avenue between 40th and 42nd Streets. From the Port Authority, travelers can take the A, C, E, N, Q, R, W, 1, 2, 3, and 7 trains, as well as the S shuttle to Grand Central Terminal. To take the subway trains from this stop, you may pay via Metrocard, [OMNY card](#), [Apple Pay](#), Debit or Credit Cards. If using OMNY, we suggest you [set-up an OMNY](#) account prior to arriving to New York.



Hudson Yards

Another major bus stop from other cities is Hudson Yards. Hudson Yards is located on the west side of midtown Manhattan, close to the Hudson River. Several bus companies stop between 11th and 12th Avenues by 34th, 35th and 36th streets.

The closest subway line to these bus stops is the Hudson Yards stop of the 7 train. This subway stop is located between 11th and 12th Avenues along 34th Street. To take the subway train from this stop, you may pay via



Where to Stay

We suggest several affordable housing options that participants from out of town can stay in while visiting New York.

MENNO HOUSE

314 E 19th St, New York, NY 10003

<https://mennohouse.org>

Menno House is a residence and guest house that provide housing for church volunteers, students and non profit workers. It is located in the east side in the Gramercy Neighborhood (south of UN).

They offer 3 guest rooms. Each room has a queen size bed, as well as a loft that holds additional mattresses. Rooms are private to the reserving party. Cost is \$100 for one person + \$40 for each additional person, per room, per night.



Travelling to the Church Center from Menno House

To go to the Church Center for the UN from Menno House, you can take the northbound M15 bus from the corner of 1st Avenue and 20th Street. Then get off the 1st Avenue-45th Street Stop and walk back down to 44th street for the Church Center.

To take the bus or subway train , you may pay via Metrocard, [OMNY card](#), [Apple Pay](#), Debit or Credit Cards.

To reserve a room, please email mennohousemanager@gmail.com or call 212-677-1611.

THOMAS BERRY RETREAT HOUSE

86-45 Edgerton Boulevard

Jamaica, New York 11432

<https://thepassionists.org/thomas-berry-place-campaign>

The Thomas Berry Retreat House is located in Jamaica, Queens operated by the Passionist Ministry. They offer individual rooms. Each room costs \$85 and includes breakfast. Parking is also available at the Retreat House for those coming in groups from out of the city.



Travelling to the Church Center from the Berry Retreat House

To go to the Church Center for the UN from the Berry Retreat House, you can take a Manhattan bound F train located at the Jamaica-179 Street Stop (a block away from the Retreat House). Get off the Lexington Ave-53rd Street Stop. You can either walk down to the Church Center (about 15 minute walk), or you can take an M15 bus heading south from 2nd Avenue

corner 54th Street. Get off the 46th Street stop and from there walk to the Church Center.

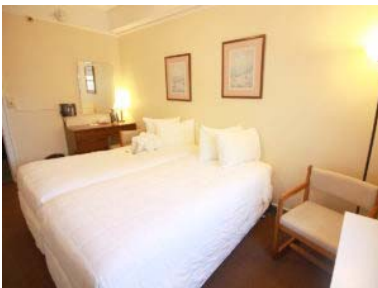
To take the bus or subway train , you may pay via Metrocard, [OMNY card](#), [Apple Pay](#), Debit or Credit Cards.

To reserve a room, please coordinate with our the event organizers.

THE LEO HOUSE

332 W 23rd St, New York, NY 10011
<https://leohousenyc.com/>

The Leo House is a nonprofit Catholic guesthouse. It is located in the Chelsea neighborhood in the west side of Manhattan. They offer rooms that include a private full or half bathrooms options.



Travelling to the Church Center from the Leo House

To go to the Church Center for the UN from the Leo House, you can take an eastbound M23 Bus. Get off on the corner of 1st Avenue and 23rd Street. From there, take a northbound M15 bus and get off the 45th street stop. Then walk to the Church Center on 44th Street.

To take the bus , you may pay via Metrocard, [OMNY card](#), [Apple Pay](#), Debit or Credit Cards.

To reserve a room, you may visit their website or email lhreservations@332west23nyc.org

THE LOCAL NY

13-02 44th Avenue, Long Island City, NY 11101

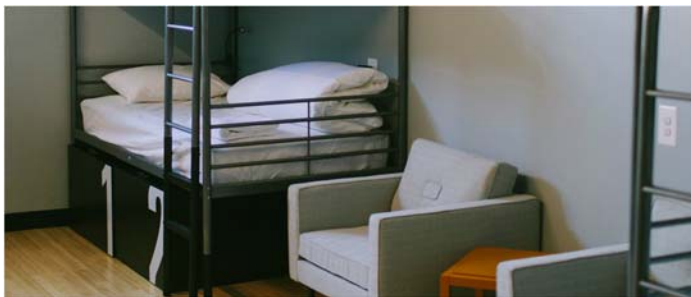
<https://thelocalny.com>

The Local is located in Long Island City in Queens. They offer 4-person occupancy rooms with its own private bathroom. The cost is \$49.49 per person per night. However, if you are travelling on your own, or in groups less than 4, you may end up sharing the room with another traveler.

Travelling to the Church Center from the Local NY

The easiest way to go to the Church Center for the UN from the Local NY is to take a Manhattan bound 7 train from the Court Square Station located at 23rd Street and 45th Avenue (about 8 minute walk). Get off Grand Central. You can then walk to the from Grand Central.

To take the subway , you may pay via Metrocard, [OMNY card](#), [Apple Pay](#), Debit or Credit Cards.





Getting to the Church Center for the UN

The Church Center for the United Nations is located at 777 UN Plaza, corner of East 44th St. and First Ave., New York, NY 10017.

Travel By Public Transportation

The easiest way to go to the Church Center is to travel by train to Grand Central Terminal. **Grand Central Terminal** is located at East 42nd Street, between Vanderbilt and Lexington Avenues. The Church Center is just a 9 minute walk from Grand Central.

To go to Grand Central, travelers can take the 4, 5, 6, 7 subway lines as well as the S shuttle line from Port Authority. You may pay via Metrocard, [OMNY card](#), [Apple Pay](#), Debit or Credit Cards to use the subway.

MetroNorth and LIRR trains also go to Grand Central. Tickets for MetroNorth and LIRR are available in every Metronorth and LIRR train station.

Travelers within Manhattan may also take the bus to go to the Church Center. Busses that pass by closest to the Church Center are the [M15 bus](#) (travels along First Avenue), [M42 bus](#) (travels along 42nd Street), [M101 bus](#) (travels along Lexington Avenue southbound and Third Avenue northbound), [M102 bus](#) (travels along Lexington Avenue southbound and Third Avenue northbound) and [M103 bus](#) (travels along Lexington Avenue southbound and Third Avenue northbound).

Travel by Private Vehicle

Several parking garages are available near the UN and the Church Center. There are several one way streets in Manhattan and so we advise drivers to use GPS guides or to study their routes before their trip as it may take a long time to correct a wrong turn in the city.

Suggested Parking Garages:

GMC Parking

443 East 49th Street

(212) 688-7666

<https://www.gmcparking.com/locations-rates/midtown/carlton/>

ABM Parking

866 UN Plaza

(GPS Address is 430 East 49th Street)

(212) 753-6769

parkabm.com

iPark

475 East 36th Street

(646) 684-4070

ipark.com